

Notes:

Technology: 2.1A max

Port: Type-A

LED: Blue

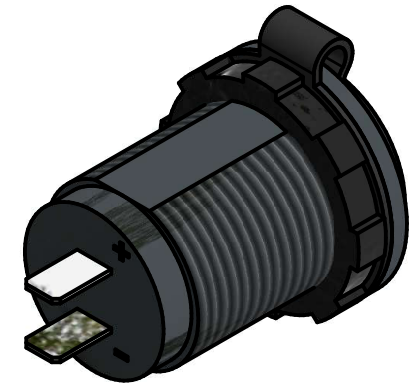
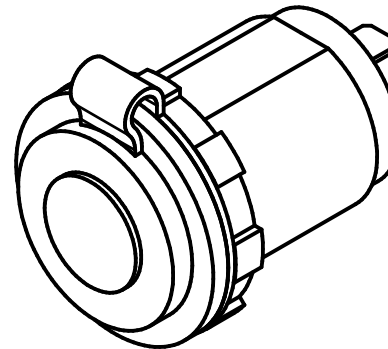
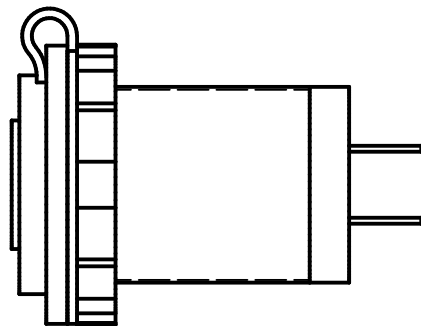
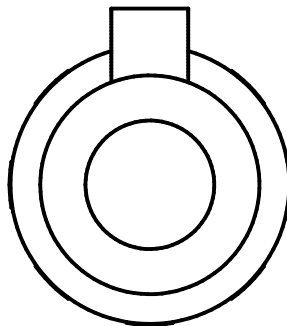
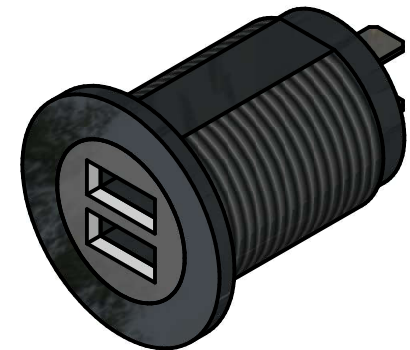
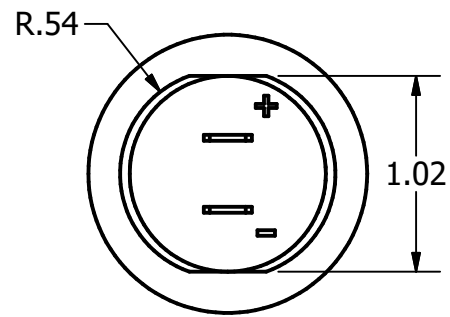
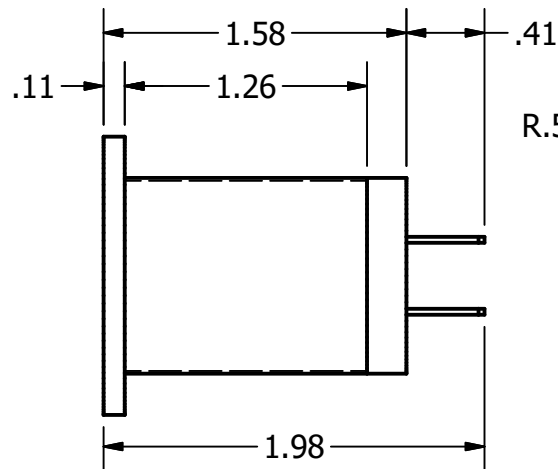
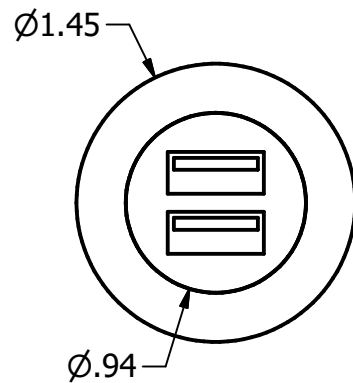
Mounting: Panel Mount


Input: 12vdc

Output: 5V/2.1A

Amps: 0.01A (Blue LED)

Connection: Terminals (2)



REV	DESCRIPTION	BY	DATE					DESCRIPTION: DUAL USB OUTLET (W/ LIGHT) (W/ COVER)			
								PART #: 1251102		DWG #: 1251102.idw	
								SCALE: NA	UNIT OF MEASURE: IN	DWG SIZE: A	NOTE:
								DATE CREATED: 3-8-21		DRAWN BY: RSH	
										SHEET: 1	
										REV:	